

# 3 PERSON SLEEPER



## Advantages

- Clean, modern, inviting.
- Lowest average age in the industry.
- Detailed maintenance programs.
- 24/7 on-call service and support.
- Custom spaces & accommodation for specific projects.

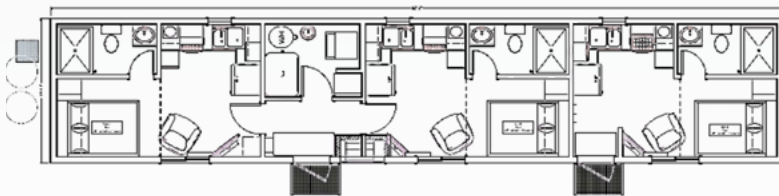
## Sizes available

12' x 60' | 14' x 60'

## Features

- LCD high definition TVs
- Satellite receivers
- Washer & dryer
- Refrigerators
- DVD players
- Coffee makers
- 800 gal water storage
- 2 x 400 lb propane bottles
- Air conditioning
- 2-4 bathrooms
- Forced air furnace
- Central vacuum
- Desk & chairs

## Floor plan



Layout pictured is an example only. Multiple layouts are available.

**SPEAK WITH AN EXPERT TO FIND OUT MORE:**

1.877.347.1628 | [apexsiterentals.com](http://apexsiterentals.com)



INNOVATION | ENVIRONMENT | SAFETY | SERVICE